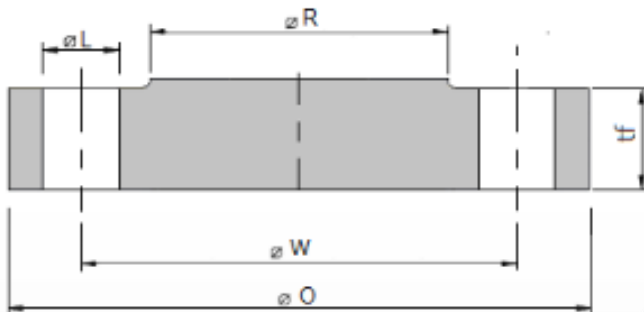


FLANGE CIEGO A105 600 LBS RF

Dimensiones en pulgadas y (milímetros)

| Tamaño nominal de la tubería | Ø exterior O | Mínimo espesor tf | Ø Cara elevada R | Taladros | | | Ø Tornillo |
|------------------------------|--------------|-------------------|------------------|-----------------|---------------|----------------|----------------|
| | | | | Ø W centro tal. | Número de tal | Ø alto. L | |
| 1/2 (15) | 3,75 (95) | 0,56 (14,3) | 1,38 (34,9) | 2,62 (66,7) | 4 | 3/8 (15,875) | 1/2 (12,7) |
| 3/4 (20) | 4,62 (115) | 0,62 (15,9) | 1,69 (42,9) | 3,25 (82,6) | 4 | 3/4 (19,05) | 5/8 (15,875) |
| 1 (25) | 4,88 (125) | 0,69 (17,5) | 2 (50,8) | 3,5 (88,9) | 4 | 3/4 (19,05) | 5/8 (15,875) |
| 1 1/4 (32) | 5,25 (135) | 0,81 (20,7) | 2,5 (63,5) | 3,88 (98,4) | 4 | 3/4 (19,05) | 5/8 (15,875) |
| 1 1/2 (40) | 6,12 (155) | 0,88 (22,3) | 2,88 (73) | 4,5 (114,3) | 4 | 7/8 (22,225) | 3/4 (19,05) |
| 2 (50) | 6,5 (165) | 1 (25,4) | 3,62 (92,1) | 5 (127) | 8 | 3/4 (19,05) | 5/8 (15,875) |
| 2 1/2 (65) | 7,5 (190) | 1,12 (28,6) | 4,12 (104,8) | 5,88 (149,2) | 8 | 7/8 (22,225) | 3/4 (19,05) |
| 3 (80) | 8,25 (210) | 1,25 (31,8) | 5 (127) | 6,62 (168,3) | 8 | 7/8 (22,225) | 3/4 (19,05) |
| 3 1/2 (90) | 9 (230) | 1,38 (35) | 5,5 (139,7) | 7,25 (184,2) | 8 | 1 (25,4) | 7/8 (22,225) |
| 4 (100) | 10,75 (275) | 1,5 (38,1) | 6,19 (157,2) | 8,5 (215,9) | 8 | 1 (25,4) | 7/8 (22,225) |
| 5 (125) | 13 (330) | 1,75 (44,5) | 7,31 (185,7) | 10,5 (266,7) | 8 | 1 1/8 (28,575) | 1 (25,4) |
| 6 (150) | 14 (355) | 1,88 (47,7) | 8,5 (215,9) | 11,5 (292,1) | 12 | 1 1/8 (28,575) | 1 (25,4) |
| 8 (200) | 16,5 (420) | 2,19 (55,6) | 10,62 (269,9) | 13,75 (349,2) | 12 | 1 1/4 (31,75) | 1 1/8 (28,575) |
| 10 (250) | 20 (510) | 2,5 (63,5) | 12,75 (323,8) | 17 (431,8) | 16 | 1 3/8 (34,925) | 1 1/4 (31,75) |
| 12 (300) | 22 (560) | 2,62 (66,7) | 15 (381) | 19,25 (489) | 20 | 1 3/8 (34,925) | 1 1/4 (31,75) |
| 14 (350) | 23,75 (605) | 2,75 (69,9) | 16,25 (412,8) | 20,75 (527) | 20 | 1 1/2 (38,1) | 1 3/8 (34,925) |
| 16 (400) | 27 (685) | 3 (76,2) | 18,5 (469,9) | 23,75 (603,2) | 20 | 1 3/8 (41,275) | 1 1/2 (38,1) |
| 18 (450) | 29,25 (745) | 3,25 (82,6) | 21 (533,4) | 25,75 (654) | 20 | 1 3/4 (44,45) | 1 3/8 (41,275) |
| 20 (500) | 32 (815) | 3,5 (88,9) | 23 (584,2) | 28,5 (723,9) | 24 | 1 3/4 (44,45) | 1 3/8 (41,275) |
| 24 (600) | 37 (940) | 4 (101,6) | 27,25 (692,2) | 33 (838,2) | 24 | 2 (50,8) | 1 7/8 (47,625) |



CONTÁCTANOS

Lautaro 2083 2097
Lote 5, Concepción

ventas@wenganindustrial.cl

+56 9 8731 4484

www.wenganindustrial.cl

SÍGUENOS EN
REDES SOCIALES



@wenganindustrialtda