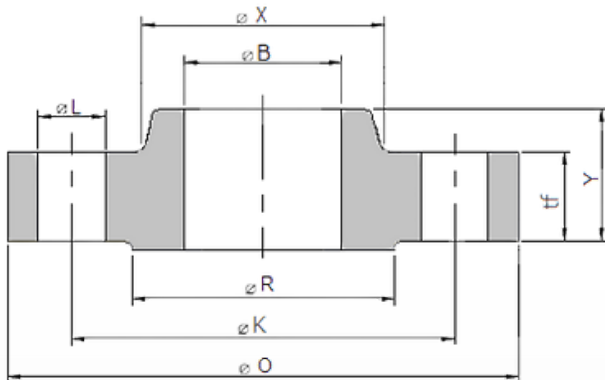


# FLANGE SO SS316L 150

Dimensiones en pulgadas y (milímetros)

Tamaño Nominal Tubería	Ø exterior O	Mínimo espesor tf	Ø Hub X	Longitud con Hub Y	Ø Mínimo agujero B	Ø Raised Face R	Taladros			
							Ø K centro tal.	Nº tal	Ø tal. L	Ø Tornillo
1/2 (DN15)	3.5 (90)	0.38 (9.6)	1.19 (30)	0.56 (14)	0.88 (22.2)	1.38 (34.9)	2.38 (60.3)	4	5/8 (15.875)	1/2 (12.7)
3/4 (DN20)	3.88 (100)	0.44 (11.2)	1.5 (38)	0.56 (14)	1.09 (27.7)	1.69 (42.9)	2.75 (69.9)	4	5/8 (15.875)	1/2 (12.7)
1 (DN25)	4.25 (110)	0.5 (12.7)	1.94 (49)	0.62 (16)	1.36 (34.5)	2 (50.8)	3.12 (79.4)	4	5/8 (15.875)	1/2 (12.7)
1 1/4 (DN32)	4.62 (115)	0.56 (14.3)	2.31 (59)	0.75 (19)	1.7 (43.2)	2.5 (63.5)	3.5 (88.9)	4	5/8 (15.875)	1/2 (12.7)
1 1/2 (DN40)	5 (125)	0.62 (15.9)	2.56 (65)	0.81 (21)	1.95 (49.5)	2.88 (73)	3.88 (98.4)	4	5/8 (15.875)	1/2 (12.7)
2 (DN50)	6 (150)	0.69 (17.5)	3.06 (78)	0.94 (24)	2.44 (61.9)	3.62 (92.1)	4.75 (120.7)	4	3/4 (19.05)	5/8 (15.875)
2 1/2 (DN65)	7 (180)	0.81 (20.7)	3.56 (90)	1.06 (27)	2.94 (74.6)	4.12 (104.8)	5.5 (139.7)	4	3/4 (19.05)	5/8 (15.875)
3 (DN80)	7.5 (190)	0.88 (22.3)	4.25 (108)	1.12 (29)	3.57 (90.7)	5 (127)	6 (152.4)	4	3/4 (19.05)	5/8 (15.875)
3 1/2 (DN90)	8.5 (215)	0.88 (22.3)	4.81 (122)	1.19 (30)	4.07 (103.4)	5.5 (139.7)	7 (177.8)	8	3/4 (19.05)	5/8 (15.875)
4 (DN100)	9 (230)	0.88 (22.3)	5.31 (135)	1.25 (32)	4.57 (116.1)	6.19 (157.2)	7.5 (190.5)	8	3/4 (19.05)	5/8 (15.875)
5 (DN125)	10 (255)	0.88 (22.3)	6.44 (164)	1.38 (35)	5.66 (143.8)	7.31 (185.7)	8.5 (215.9)	8	7/8 (22.225)	3/4 (19.05)
6 (DN150)	11 (280)	0.94 (23.9)	7.56 (192)	1.5 (38)	6.72 (170.7)	8.5 (215.9)	9.5 (241.3)	8	7/8 (22.225)	3/4 (19.05)
8 (DN200)	13.5 (345)	1.06 (27)	9.69 (246)	1.69 (43)	8.72 (221.5)	10.62 (269.9)	11.75 (298.5)	8	7/8 (22.225)	3/4 (19.05)
10 (DN250)	16 (405)	1.12 (28.6)	12 (305)	1.88 (48)	10.88 (276.2)	12.75 (323.8)	14.25 (362)	12	1 (25.4)	7/8 (22.225)
12 (DN300)	19 (485)	1.19 (30.2)	14.38 (365)	2.12 (54)	12.88 (327)	15 (381)	17 (431.8)	12	1 (25.4)	7/8 (22.225)
14 (DN350)	21 (535)	1.31 (33.4)	15.75 (400)	2.19 (56)	14.14 (359.2)	16.25 (412.8)	18.75 (476.3)	12	1 1/8 (28.575)	1 (25.4)
16 (DN400)	23.5 (595)	1.38 (35)	18 (457)	2.44 (62)	16.16 (410.5)	18.5 (469.9)	21.25 (539.8)	16	1 1/8 (28.575)	1 (25.4)
18 (DN450)	25 (635)	1.5 (38.1)	19.88 (505)	2.62 (67)	18.18 (461.8)	21 (533.4)	22.75 (577.9)	16	1 1/4 (31.75)	1 1/8 (28.575)
20 (DN500)	27.5 (700)	1.62 (41.3)	22 (559)	2.81 (71)	20.2 (513.1)	23 (584.2)	25 (635)	20	1 1/4 (31.75)	1 1/8 (28.575)
24 (DN600)	32 (815)	1.81 (46.1)	26.12 (663)	3.19 (81)	24.25 (616)	27.25 (692.2)	29.5 (749.3)	20	1 3/8 (34.925)	1 1/4 (31.75)



## CONTÁCTANOS

Lautaro 2083 2097  
Lote 5, Concepción

ventas@wenganindustrial.cl

+56 9 8731 4484

www.wenganindustrial.cl

SÍGUENOS EN  
REDES SOCIALES

