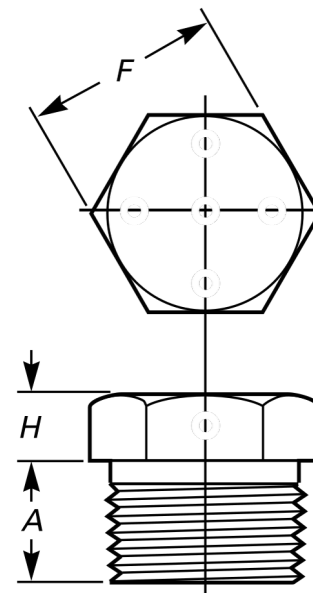
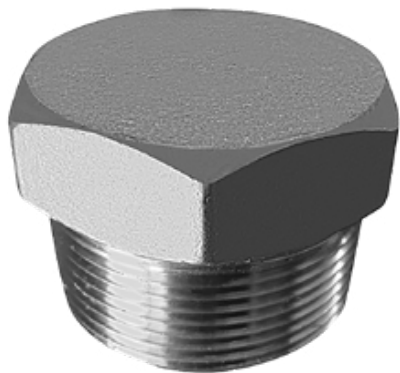


HEX PLUG FORGED STEEL ASTM A105 CLASS 3000/6000 NPT



Design: ANSI B16.11
Threaded: NPT ANSI B1.20.1
Material: Forged Steel ASTM A105
Class: 3000/6000
Correlation:
 Schedule 160 / Wall Designation XXS

Units: Millimeters (mm)

Nominal Pipe Size inch	Min. Length A	Nominal Width Flats, F	Min. Hex Height, H	Approx. Weight (kg)
1/8"	10	11.11	6	0.01
1/4"	11	15.88	6	0.03
3/8"	13	17.46	8	0.04
1/2"	14	22.23	8	0.07
3/4"	16	26.99	10	0.12
1"	19	34.93	10	0.22
1 1/4"	21	44.45	14	0.42
1 1/2"	21	50.80	16	0.61
2"	22	63.50	18	1.02
2 1/2"	27	76.20	19	1.74
3"	28	88.90	21	3.21
4"	32	117.48	25	5.47

CONTÁCTANOS

 Lautaro 2083 2097
Lote 5, Concepción

 ventas@wenganindustrial.cl

 +56 9 8731 4484

 www.wenganindustrial.cl

SÍGUENOS EN
REDES SOCIALES

